

Welcome

Salento...

you can't explain it,
you have to experience it,
because it enters your soul,
embraces you and never leaves you.

Masseria & Beach

www.masseriascaledda.it



The past relives in the present





Masseria Scaledda, fortified with sea view, whose origins date back to around 1172 initially as a "defense tower" (built by the Benedictines of Aversa) then renovated and enlarged in 1856 by Raffaele Schiavoni, in a land crossroads of history and civilization.

The ancient Masseria Scaledda is surrounded by splendid natural landscapes with the incredible blue of the sea in the distance that make this masseria a masterpiece to be discovered.

The farm has kept its history and tradition unaltered, making it its strong point.

In organic cultivation olives, wheat, vegetable garden and fruit are grown. Within its 125 hectares you can take walks in the paths on foot, by bike, do physical activity in the estates, get to the sea, it is only about 2km away.

It falls within the nature reserve of the eastern Taranto coast. Nearby there are holm oak woods, archaeological areas, the Chidro river, the Salina Monaci, and the enchanting **beaches of Punta Prosciutto** and San Pietro in Bevagna.

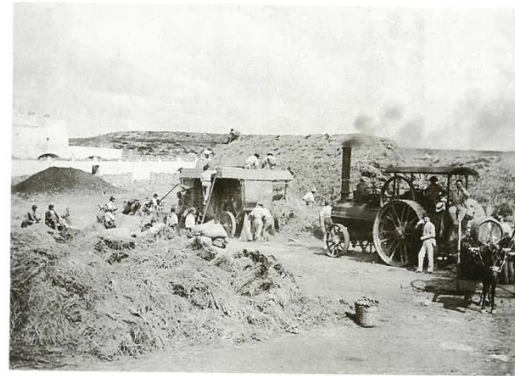




The present ...



The past ...



Fine '800-primi '900. Agro di Manduria, masseria *Scaella*, gruppo di contadini al lavoro presso la trebbiatrice a vapore. Il traino con la botte, a destra, serviva al trasporto dell'acqua per la caldaia posta sotto vento e a spegnere possibili incendi causati dalle faville che uscivano dal fumaiolo. Il movimento alla macchina era trasmesso da una lunga cinghia di cuoio (dial.: *lu cignòni*).



Fine '800-primi '900. Agro di Manduria, contrada masseria *Scaella*, il cosiddetto *Monte della Signora*. Un gregge di capre al pascolo. Seduto al centro il proprietario manduriano Menotti Schiavoni.



Legend

A: ANCIENT TRATTURO

B: ORIGINAL ENTRANCE TO THE MASSERIA FROM ANCIENT TRATTURO

C: CAROB TREE AREA REST AREA

D: MONTE DELLA *SIGNORA* OR "*TI LA CILONA* "

E: ANCIENT ACQUARO FROM 1625

F: CANALE LAMA DI SAN NICOLA OR "*CANALI TI LU RIZZU* "

G: AREA WITH "*ORTO BIO* "

H: MAIN ENTRANCE TO THE MASSERIA





The Suites and the Deluxe of Masseria

In the farm there are five "suites" and one "deluxe" room entirely renovated respecting the original nature to accommodate you in an authentic and charming dimension. The suites are equipped with bathrooms, outdoor spaces and independently accessible, have tuff vaults, original stone floors of the time and walls up to one meter thick, typical characteristics of the Salento farms.





THE CASONE (SUPERIOR SUITE)

It has a living room with kitchenette, toilet with shower, double bedroom, bedroom with third bed. Private garden with panoramic veranda.

60 square meters plus veranda of 36 square meters with garden

Up to 2 + 1 people.

SUITE SUPERIOR EQUIPMENT

- Private garden with veranda
- King-size sun loungers
- Toilet with shower
- Washing machine
- Kitchenette
- Air conditioning
- Wi-fi zone
- Fridge
- Safe deposit box
- USB player + LED TV
- Tivoli radio
- Courtesy set
- Hair dryer
- Breakfast included
- 1 umbrella and 2 sunbeds in our beach (in the opening period of the beach)







Travel improves the mind in a
wonderful way and removes our
prejudices

Oscar Wilde





THE STABLE (SUPERIOR SUITE)

It has a living room with kitchenette, toilet with shower, double bedroom and sofa bed. Private garden on the ground floor. Private plunge pool. The rooms, the vaults, the walls, the floors, the furniture are linked to the tradition of the farms of Salento.

80 square meters plus garden of 40 square meters

Up to 2 + 1 people.

SUITE SUPERIOR EQUIPMENT

- Private garden with decor
- King size sunbeds
- Toilet with shower
- Air conditioning
- Wi-fi zone
- Fridge
- Washing machine
- Kitchenette
- Safe
- Private plunge pool
- USB player + LED TV
- Radio Tivoli
- Hairdryer
- Courtesy set
- Breakfast included
- 1 umbrella and 2 sunbeds in our beach (in the opening period of the beach)







"Travelling is like dreaming: the only difference is that not everyone, once awoken, can recall their dream.

Whereas everyone has a vivid memory of the trip from which he has returned"

Edgar Allan Poe





THE MACCHIA (DELUXE ROOM)

Large room with toilet, fireplace, panoramic terrace overlooking the sea on the first floor. Double bed, possibility of a third bed. .
The rooms, the walls, the fireplace, the furniture are linked to the tradition of the farms of Salento.

40 square meters plus terrace of 25 square meters.

Up to 2 + 1 people.

DELUXE EQUIPMENT

- Panoramic terrace
- Private toilet with shower
- Wi fi zone
- Fireplace in room
- Fridge bar
- Safe deposit box
- USB player + LED TV
- Tivoli radio
- Hair dryer
- Courtesy set
- Breakfast included
- 1 umbrella and 2 sunbeds in our beach (in the opening period of the beach)







"I'm in love with cities I've never been to
and people I've never met."

John Green





THE SIGHT (SUPERIOR SUITE)

It has on the first floor a large panoramic terrace overlooking the sea, entrance hall, double bedroom, toilet with shower, second room with french bed, another toilet with shower, kitchen with fireplace, private plunge pool. The rooms, the vaults, the frescoes, the furnishings are typical of the farm of Salento.

90 square meters plus 80 square meters of panoramic livable terrace.

Up to 2 + 1 people.

SUITE SUPERIOR EQUIPMENT

- Private panoramic terrace
- King size sun loungers
- 2 toilets with shower
- Air conditioning
- Kitchen with fireplace
- Fridge - Dishwasher
- Washing machine
- Wi-fi zone
- Safe
- Private plunge pool
- USB player + LED TV
- Radio Tivoli
- Hairdryer
- Courtesy set
- Breakfast included
- 1 umbrella and 2 sunbeds in our beach (in the opening period of the beach)







*"The world is a book,
and those who do not travel
read only a page"*

Sant'Agostino d'Ippona





THE GINESTRA (SUPERIOR SUITE)

It has a living room with fireplace and kitchenette, double bedroom with third bed, toilet in the room. Panoramic terrace on the first floor with sea and mediterranean scrub view.

The rooms, the walls, the furniture are linked to the tradition of the farms of Salento

40 square meters plus terrace of 25 square meters

Up to 2 + 1 people.

SUITE SUPERIOR EQUIPMENT

- Panoramic terrace
- Private toilet with shower
- Air conditioning
- Wi fi zone
- Fireplace
- Fridge
- Safe deposit box
- Washing machine
- Kitchenette with dishwasher
- USB player + TV
- Tivoli radio
- King size sunbeds
- Hair dryer
- Courtesy set
- Breakfast included
- 1 umbrella and 2 sunbeds in our beach (in the opening period of the beach)







"The journey is a kind of door through which one leaves reality as if to penetrate into an unexplored reality that seems like a dream."

Guy de Maupassant



Our farmyard





Masseria Scaledda...

*a peaceful refuge where country life
blends with modern comfort.*





Our vegetable garden

Green...
marries with blue



Surrounded by the reserve of mediterranean vegetation

Perfect for ...



Bike tours



Trekking and Nordic Walking



Bird Watching



Relaxation by the sea just 2 km



Surroundings



Location for events

S
C
A
L
E
D
D
A

Weddings, Events and Banquetings

Spaces and capacity :Location near the sea, countryside with sea view.

We offer: The exclusivity for each event, it is also possible to rent only the structure for the event or for the holiday.

Spaces: Guest lounge, equipped garden, parking.

Services: Set-up, catering, music.

Accommodation: Suites, Deluxe Rooms.

Cuisine: Natural, traditional, regional, International.

Special Menus: Vegetarians, Vegans, Diabetics, Celiacs.

Other: Open Bar.

Please note that Masseria Scaledda does not offer direct restaurant services.





Your holiday just a few minutes from the sea...

Lido degli Angeli Beach

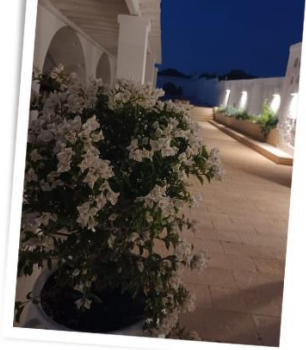


Surroundings...

We are just a few minutes from...

- **Punta Prosciutto**
- **Fiume Chidro**
- **San Pietro in Bevagna**
- **Salina dei Monaci**
- **Manduria**
- **Avetrana**
- **Nardò**









Taste & Tradition





A trip in the past



Masseria Scaledda & Beach

Via Chidro, Contrada Scaledda

74024 Manduria (TA)

Email: masseriascaledda@gmail.com

Sales: commerciale.masseriascaledda@gmail.com

Web: www.masseriascaledda.it

Telephone Number:

+39.3452698536 (Office)

Other contacts:

+39.3356167690 (Pino)

+39.3356508360 (Rosanna)

+39.3282637562 (Francesco)



+39.3452698536

Assistenza WhatsApp





Salento to live, to taste and to discover